

Logging into agave (student UNIX server) from Lab 78-109

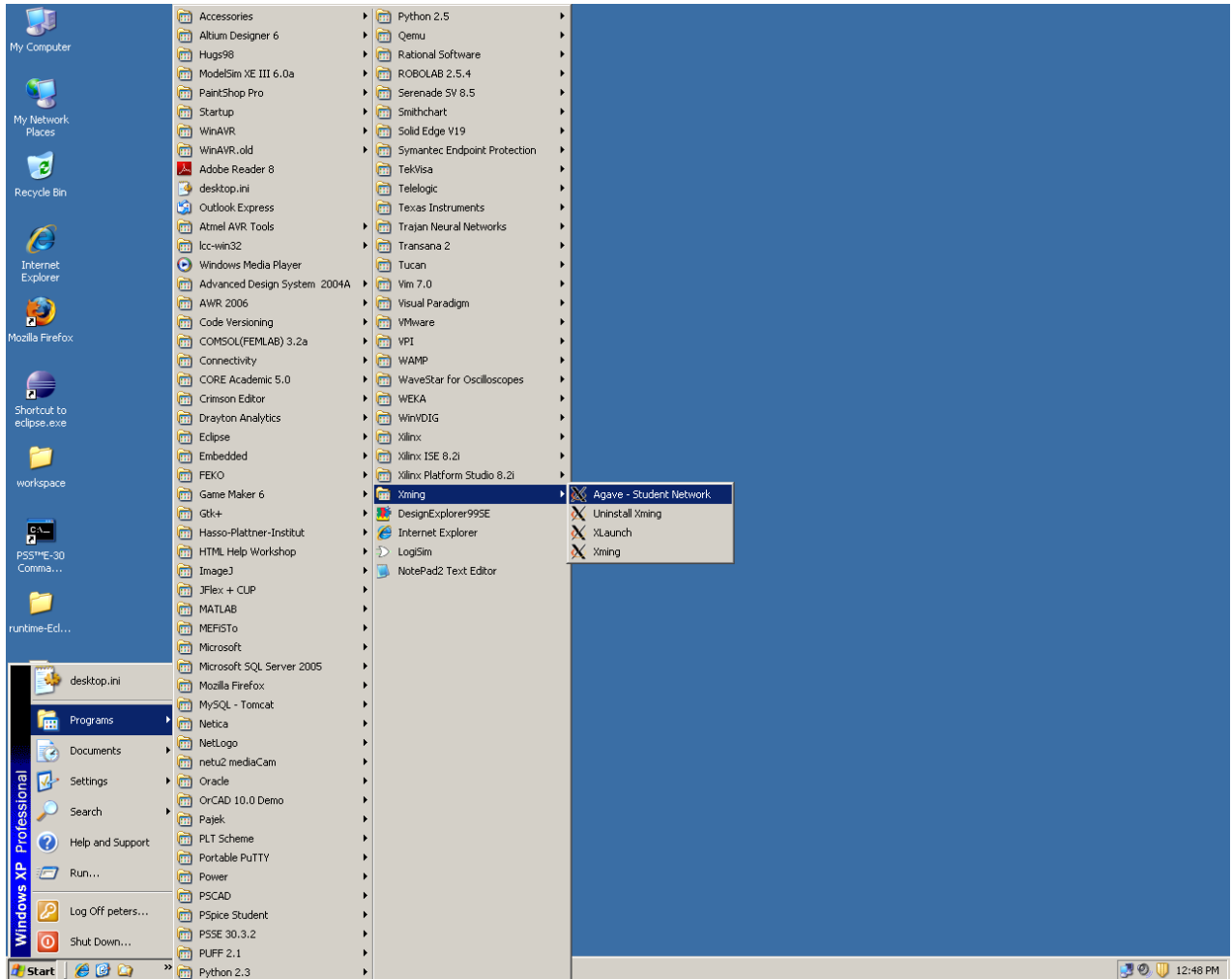
You have two choices for logging into the student UNIX server from Lab 78-109:

- (A) Graphical Login (X-windows)
- (B) Terminal Login (via Secure Shell)

The required steps are describe below for each of these methods.

A. Graphical Login

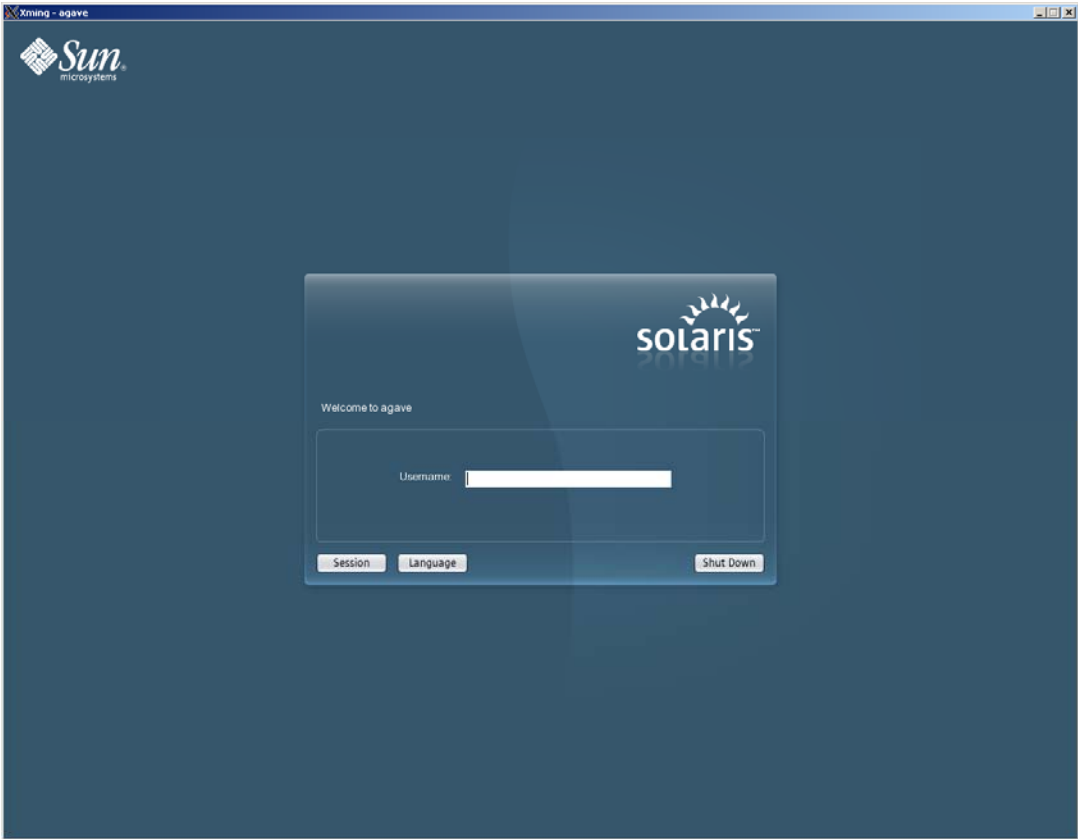
Select Start Menu -> Programs -> Xming -> Agave – Student Network



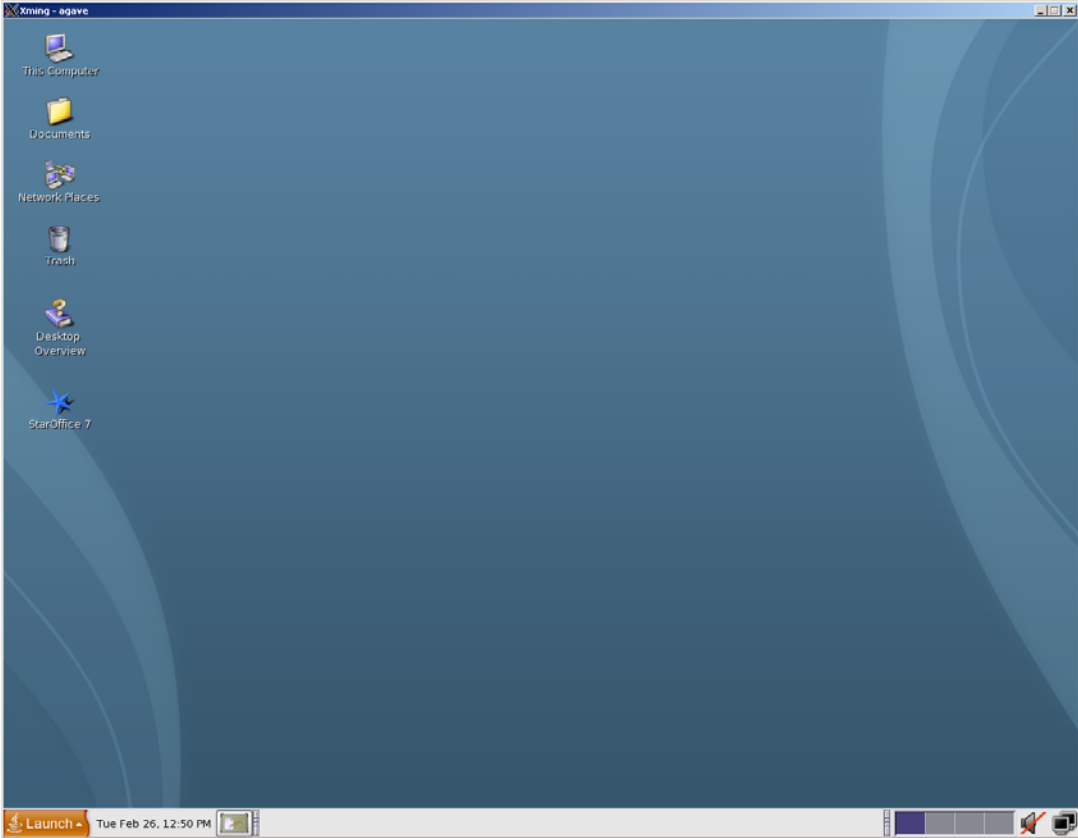
You may receive a Windows Security Alert – if so, choose “Unblock”:



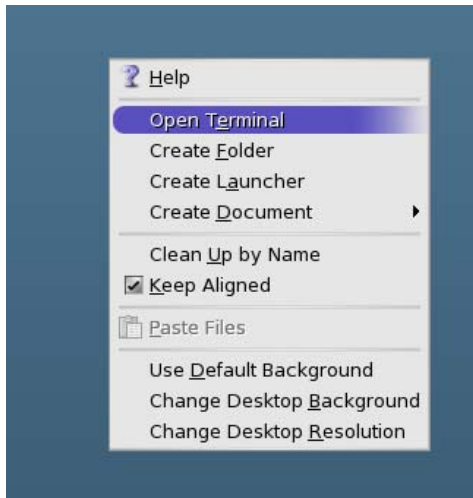
You should then see a Solaris login screen for agave:



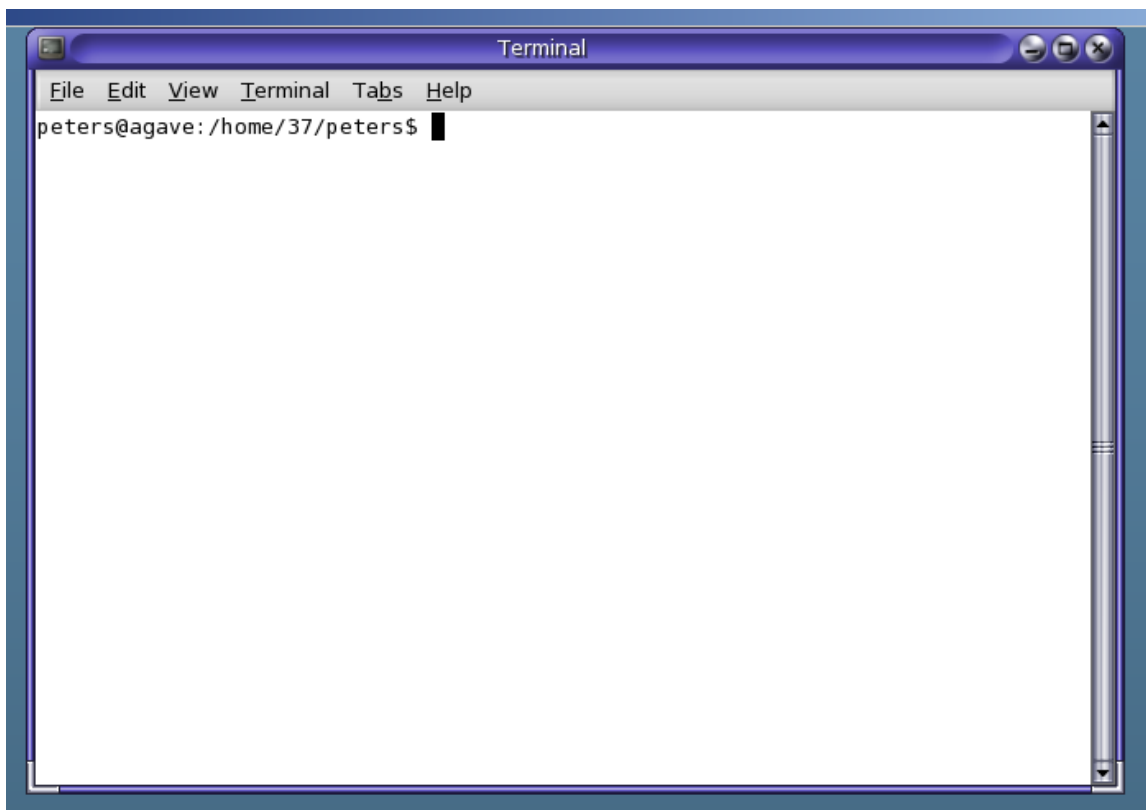
Once you enter your username and password (press "Enter" after each) you will enter a desktop session:



You can start a terminal session by right-clicking on the desktop background and choosing “Open Terminal”:



The terminal window will then appear. (The text shown may differ to that shown here.)

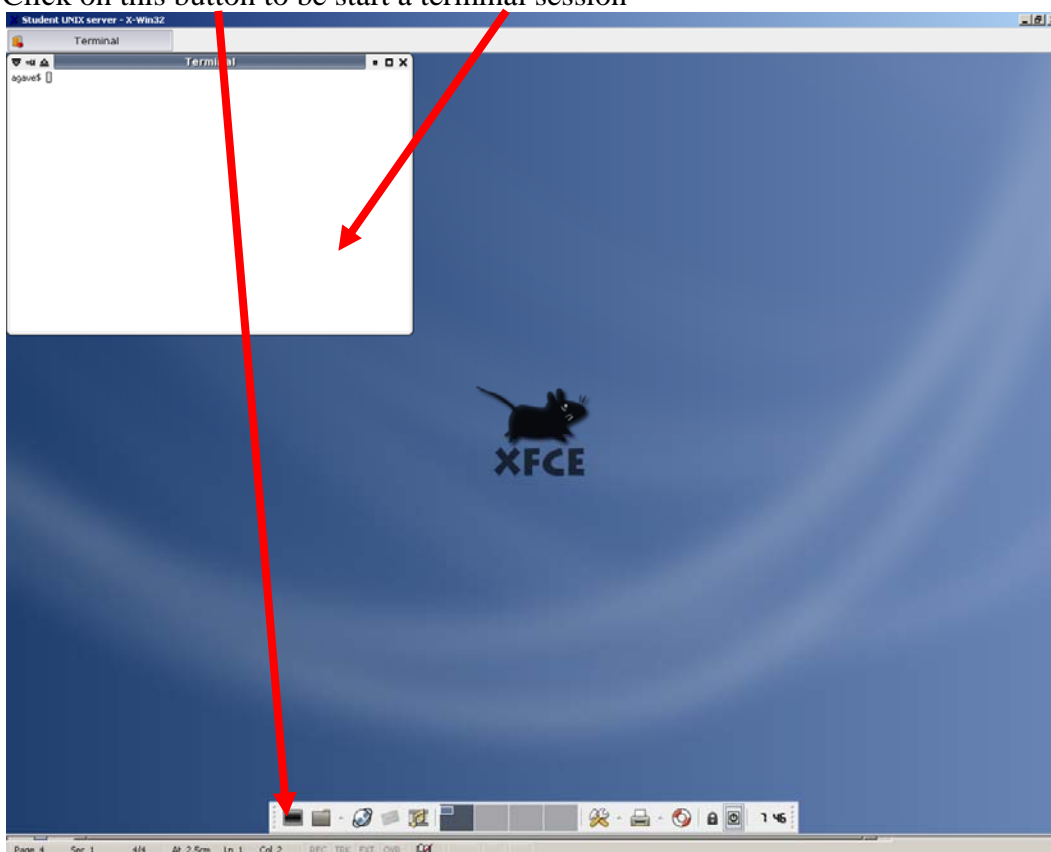


Note that there are a number of different types of “sessions” that you can choose. At the login screen, press the “Session” button to see the options:



The XFCE session is a reasonable choice:

Click on this button to be start a terminal session

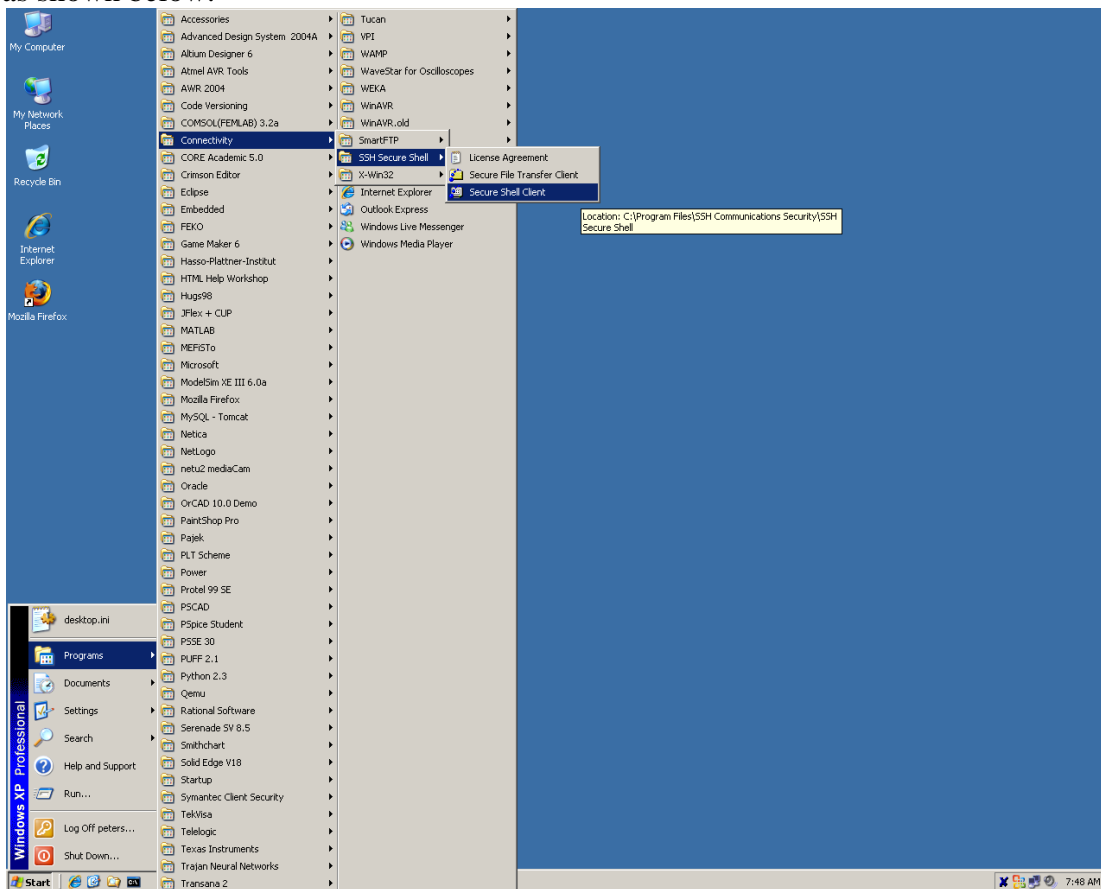


(or you can right click on the background and select the appropriate menu option).

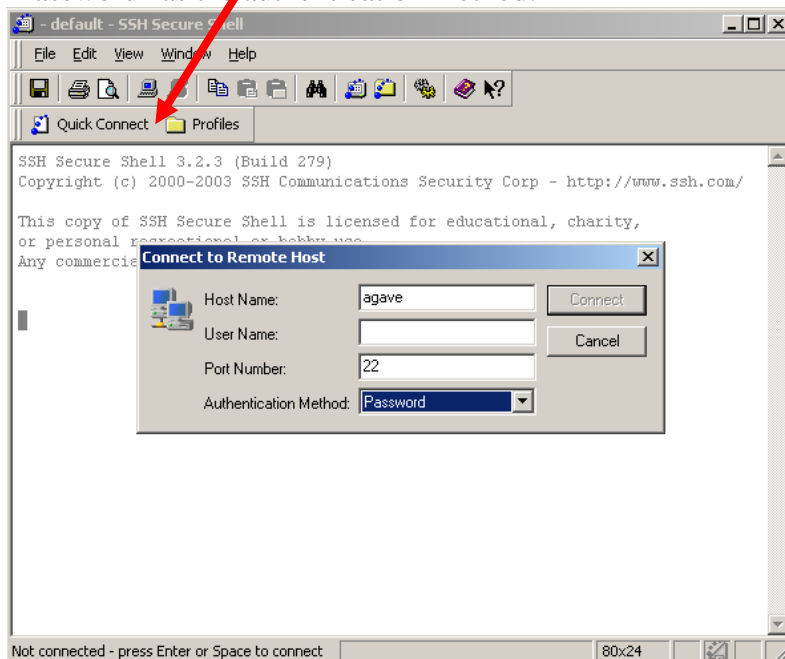
Your terminal session is now ready to use.

B. Secure Shell Connection

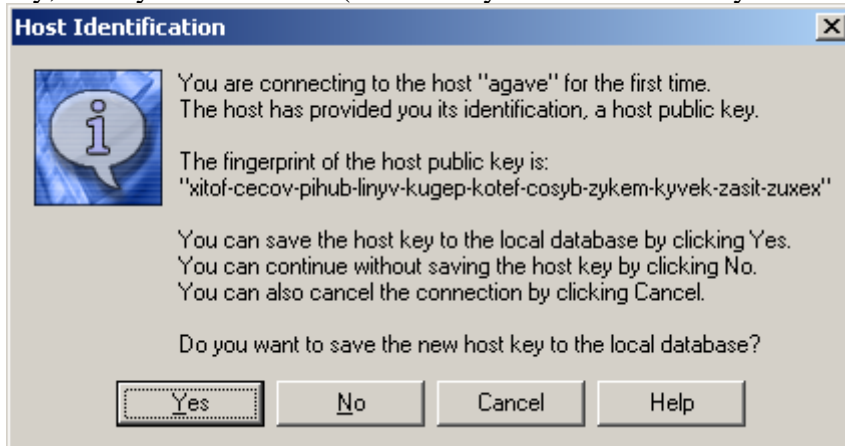
The Secure Shell client can be started from Start Menu -> Programs -> Connectivity -> SSH Secure Shell -> Secure Shell Client as shown below:



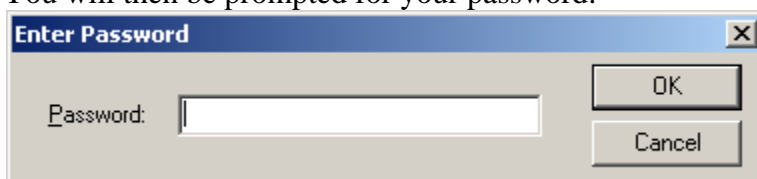
Click on “Quick Connect”, and enter “agave” as the host name, your username and select “Password” as the authentication method:



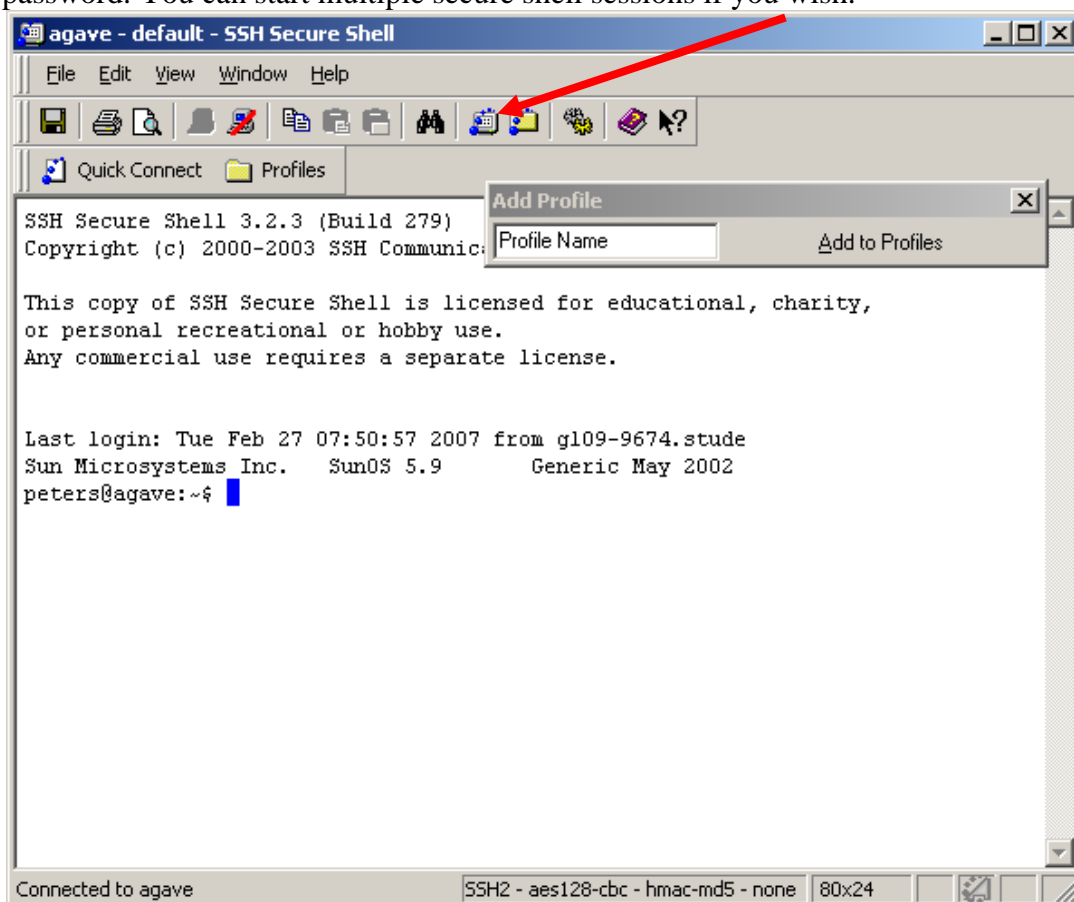
You will be warned that you haven't connected to this host before and asked to save the host key, locally. Select "Yes" (otherwise you will be similarly asked during future connections).



You will then be prompted for your password:



Once connected, you have the option of saving these connection settings as a "profile". You can name this whatever you like. This will allow you to skip the connection prompt in future (if you select the profile, rather than "Quick Connect"). You will still be prompted for your password. You can start multiple secure shell sessions if you wish.



Your terminal session is now ready to use.