















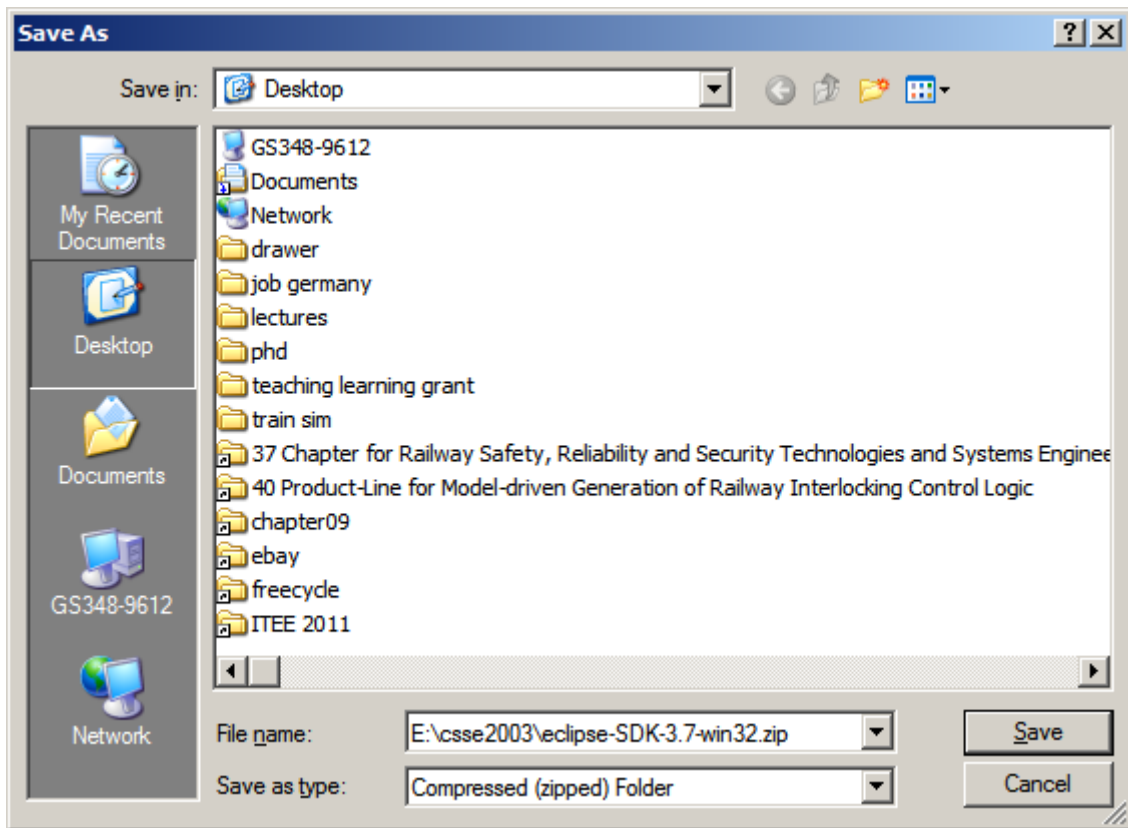


# Build Robocode on Eclipse W32 at home:

<http://www.eclipse.org/downloads/?osType=win32>

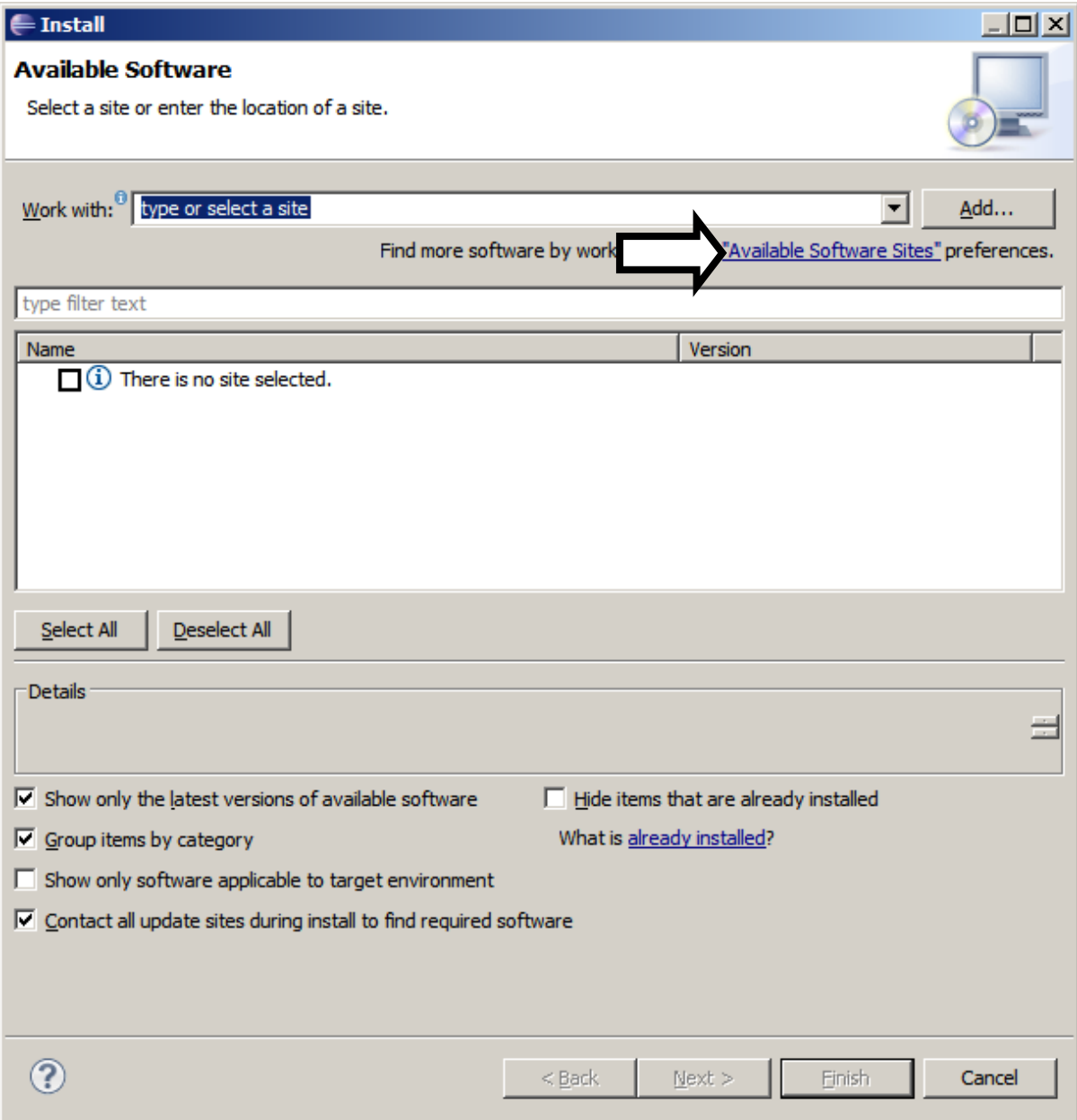
Packages Projects Indigo Torrents		
Compare Packages Older Versions		Eclipse Indigo (3.7) Packages for Windows
	<b>Eclipse IDE for Java EE Developers</b> , 212 MB Downloaded 1,166,939 Times <a href="#">Details</a>	 <a href="#">Windows 32 Bit</a> <a href="#">Windows 64 Bit</a>
	<b>Eclipse Classic 3.7</b> , 174 MB Downloaded 934,128 Times <a href="#">Details</a> <a href="#">Other Downloads</a>	 <a href="#">Windows 32 Bit</a> <a href="#">Windows 64 Bit</a>
	<b>Eclipse IDE for Java Developers</b> , 122 MB Downloaded 335,633 Times <a href="#">Details</a>	 <a href="#">Windows 32 Bit</a> <a href="#">Windows 64 Bit</a>
	<b>Actuate BIRT Designer Pro</b> <span>Promoted Download</span> Add Flash, live Excel formulas, DBMS drivers and much more to your BIRT reports.	 <a href="#">Download</a>
	<b>Eclipse IDE for JavaScript Web Developers</b> , 109 MB Downloaded 66,328 Times <a href="#">Details</a>	 <a href="#">Windows 32 Bit</a> <a href="#">Windows 64 Bit</a>
	<b>Eclipse IDE for Java and Report Developers</b> , 252 MB Downloaded 41,008 Times <a href="#">Details</a>	 <a href="#">Windows 32 Bit</a> <a href="#">Windows 64 Bit</a>
	<b>Eclipse Modeling Tools</b> , 271 MB Downloaded 24,442 Times <a href="#">Details</a>	 <a href="#">Windows 32 Bit</a> <a href="#">Windows 64 Bit</a>
	<b>Eclipse for RCP and RAP Developers</b> , 181 MB Downloaded 19,326 Times <a href="#">Details</a>	 <a href="#">Windows 32 Bit</a> <a href="#">Windows 64 Bit</a>

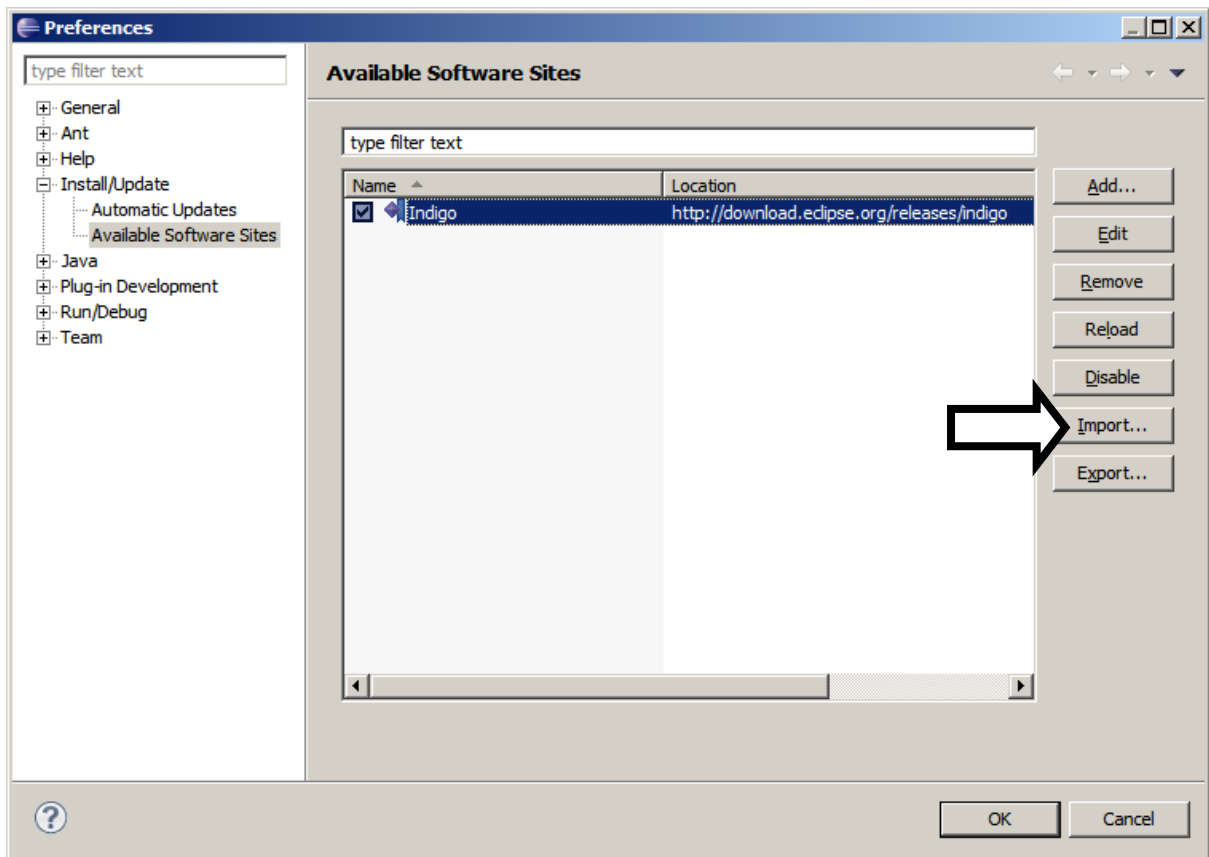
Select some and save the zip...



Extract using favourite unzip tool...



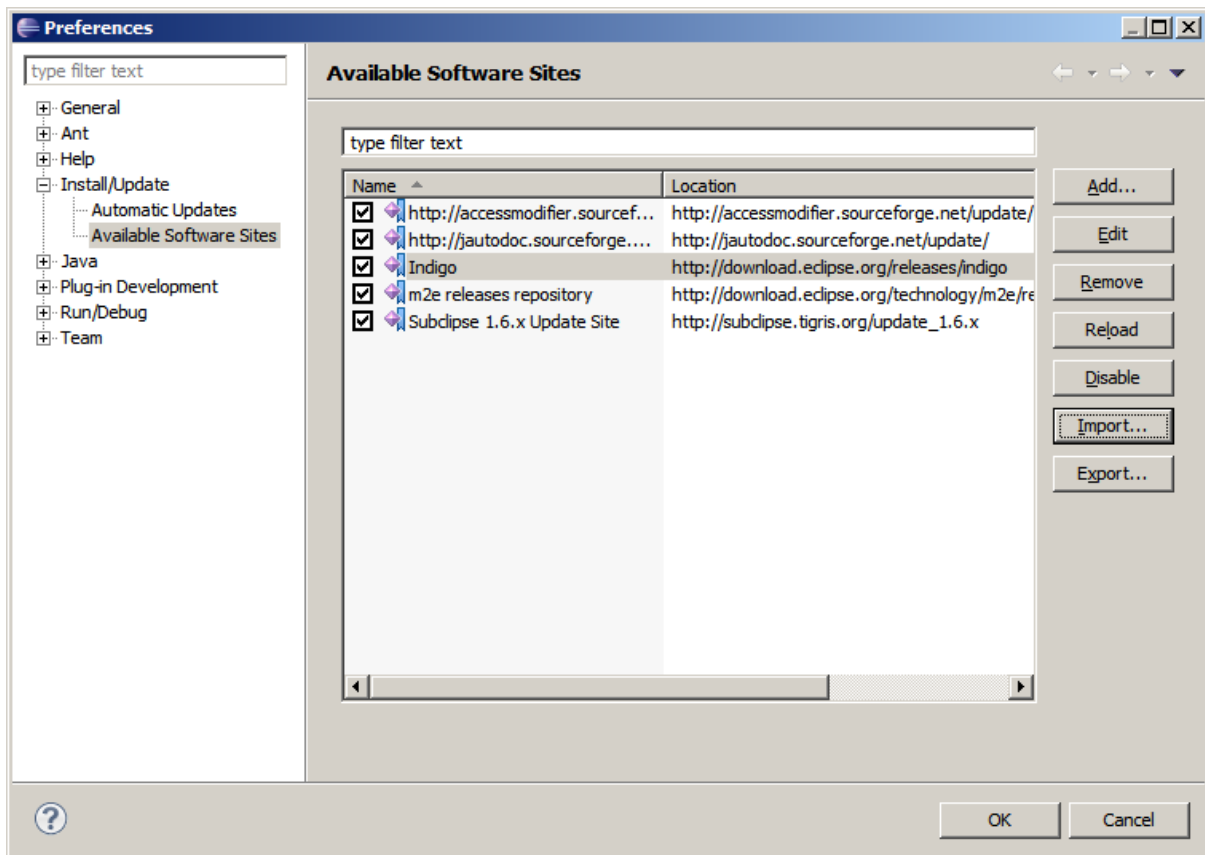
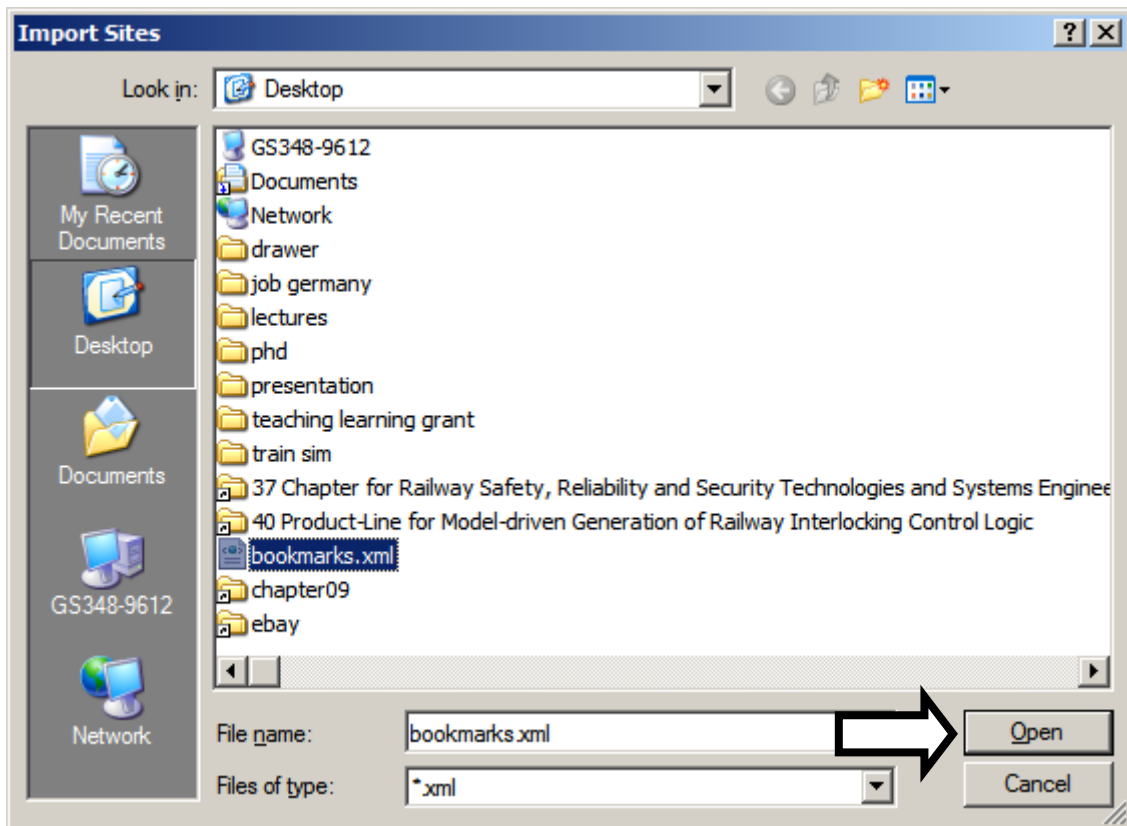


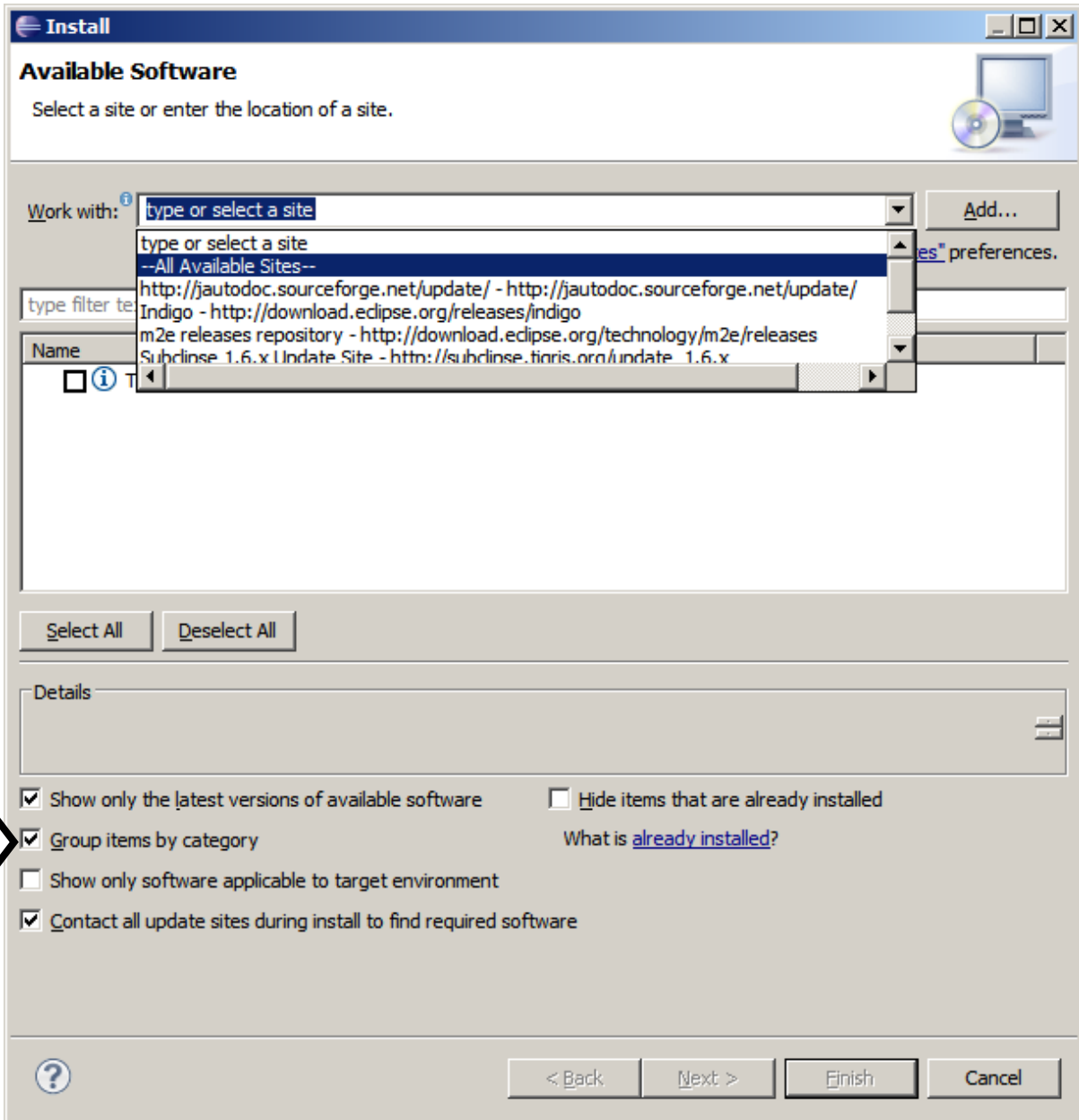


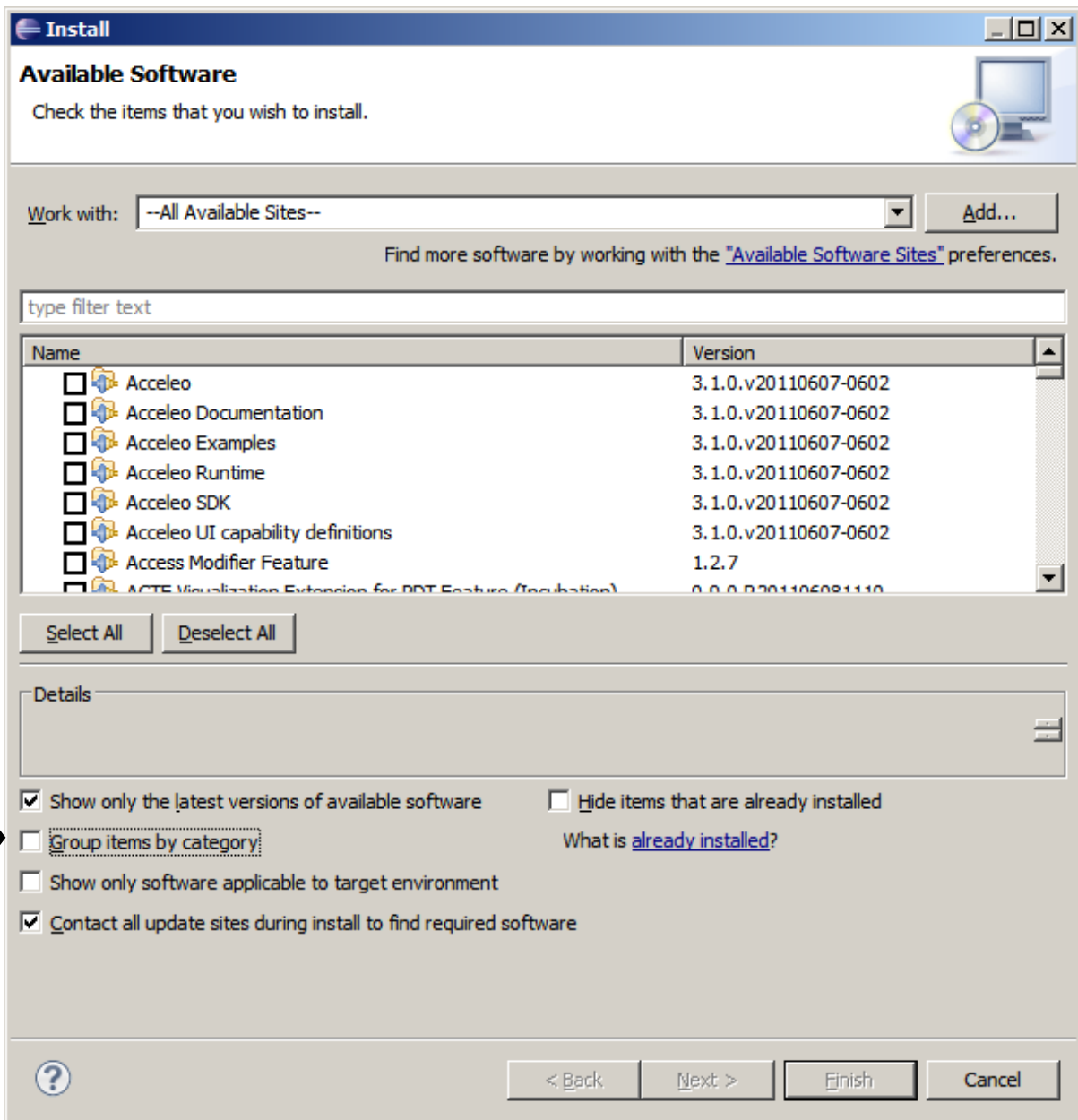
Download the bookmark file from:

[bookmarks.xml](#)

to your desktop.







**Install**

### Available Software

Check the items that you wish to install.

Work with: --All Available Sites-- Add...

Find more software by working with the ["Available Software Sites"](#) preferences.

m2

Name	Version
<input type="checkbox"/> m2e - Extensions Development Support (Optional)	1.0.0.20110607-2117
<input type="checkbox"/> m2e - Maven Integration for Eclipse	1.0.0.20110607-2117
<input type="checkbox"/> m2e - Maven Integration for Eclipse Update Site	1.0.0.20110607-2117
<input type="checkbox"/> m2e - slf4j over logback logging (Optional)	1.0.0.20110607-2117

Select All Deselect All

Details

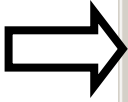
Show only the latest versions of available software  Hide items that are already installed

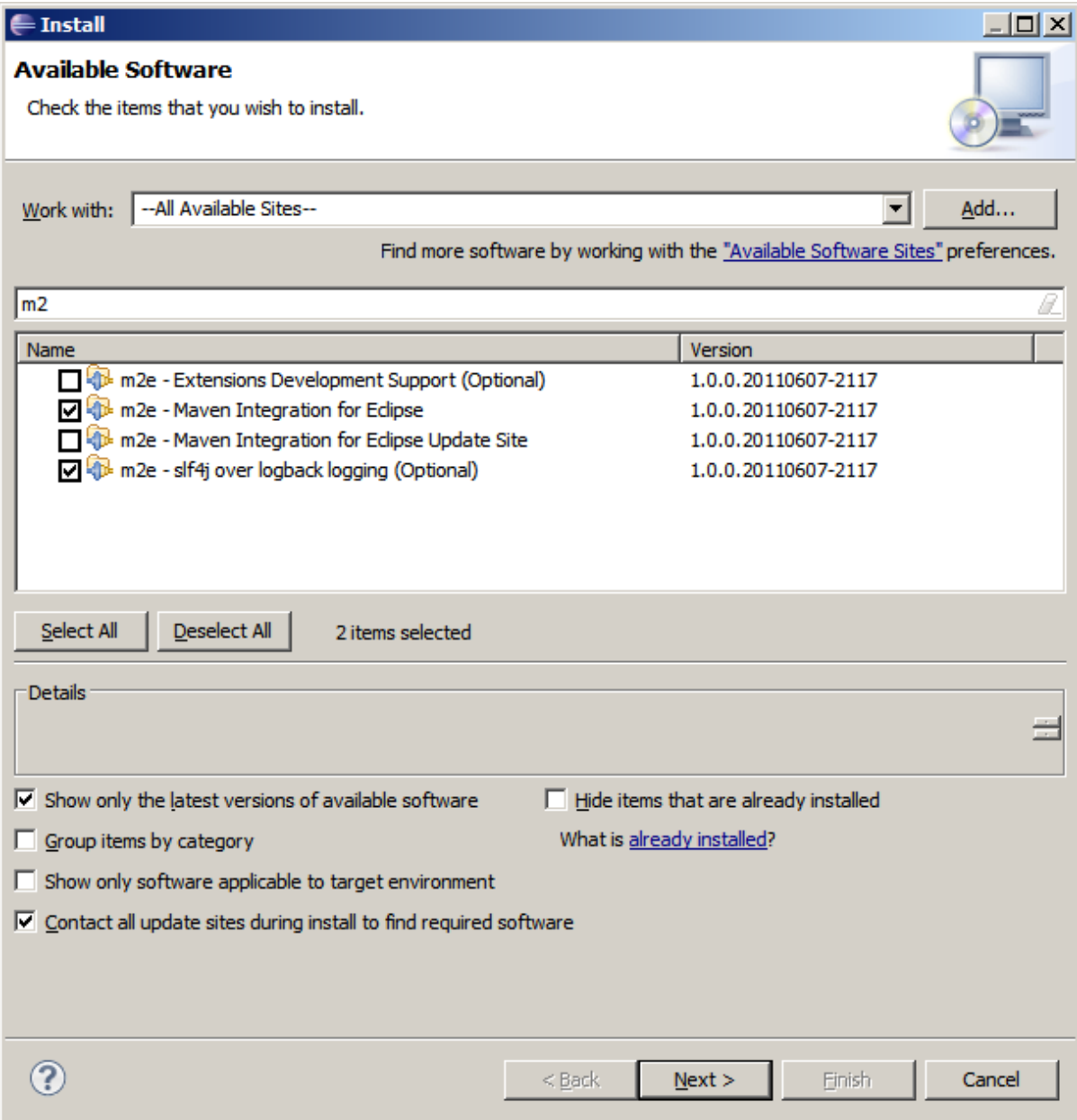
Group items by category [What is already installed?](#)

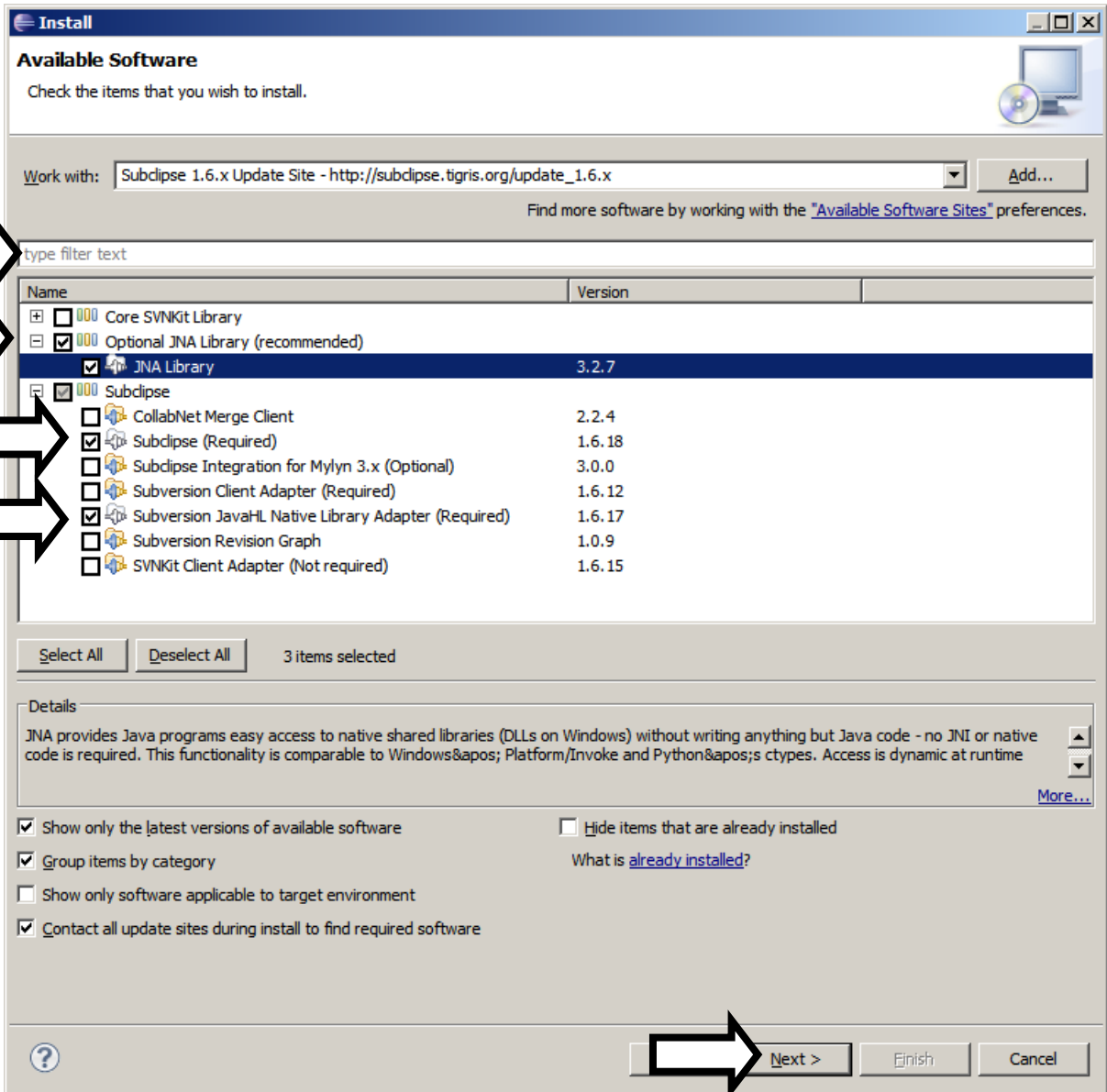
Show only software applicable to target environment

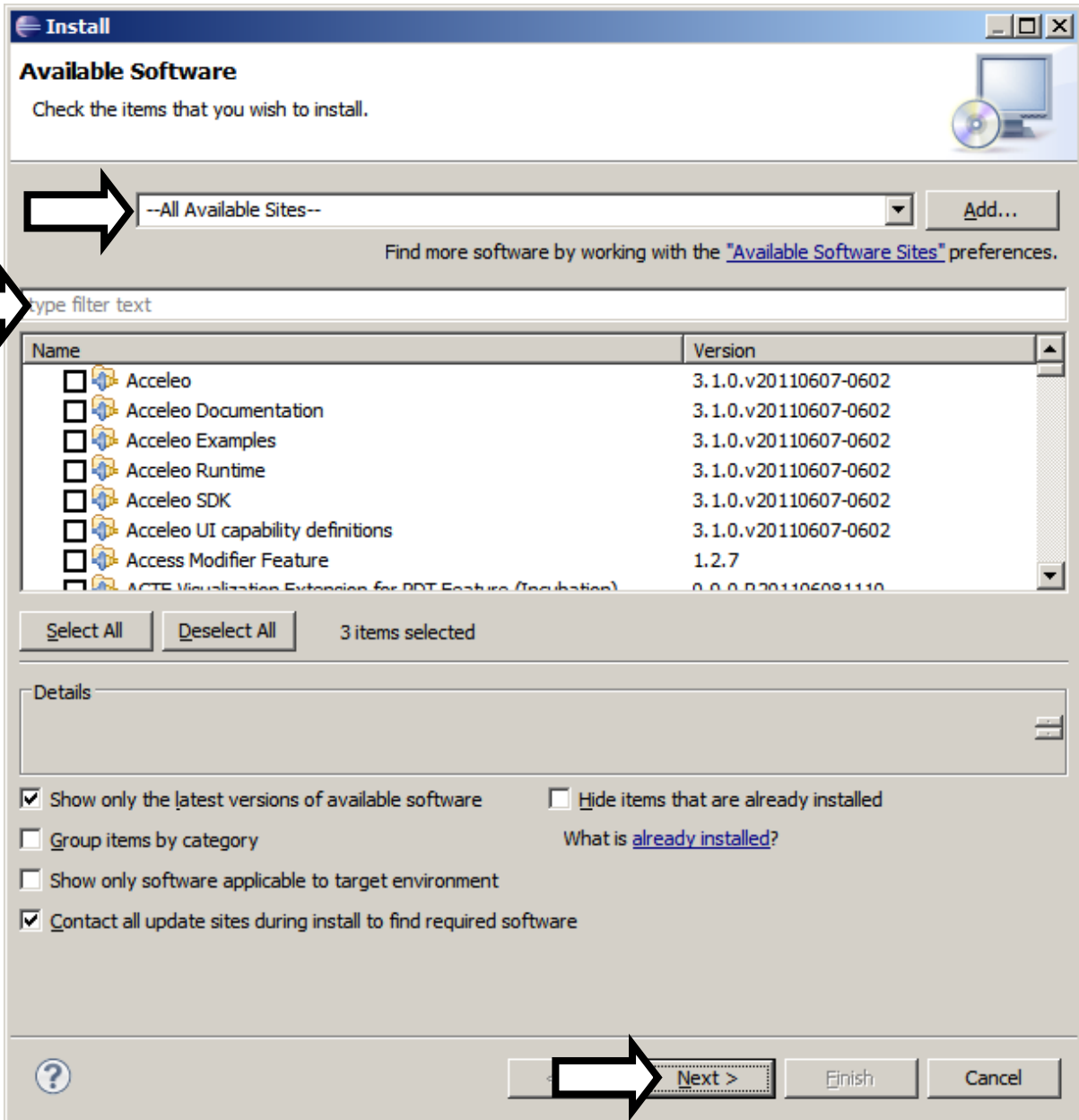
Contact all update sites during install to find required software

? < Back Next > Finish Cancel













**Install**

### Install Details

Review the items to be installed.




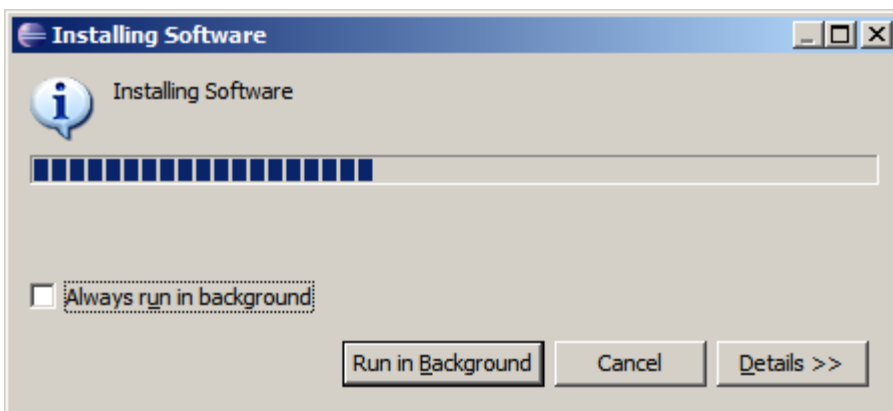
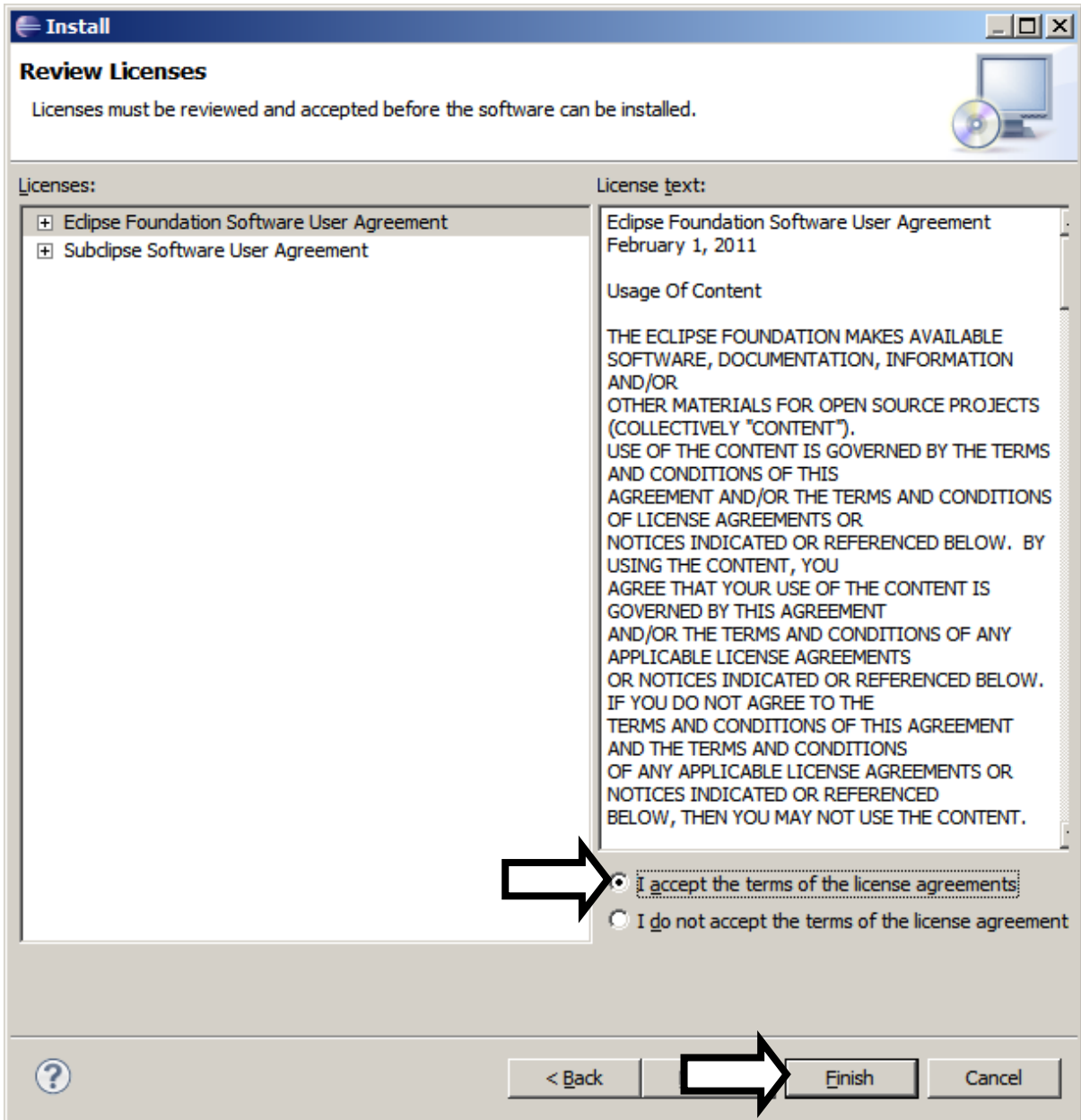
Name	Version	Id
 m2e - Maven Integration for Eclipse	1.0.0.20110607...	org.eclipse.m2e.feature.feature.group
 m2e - slf4j over logback logging (Optional)	1.0.0.20110607...	org.eclipse.m2e.logback.feature.featur...
 Subclipse (Required)	1.6.18	org.tigris.subversion.subclipse.featur...

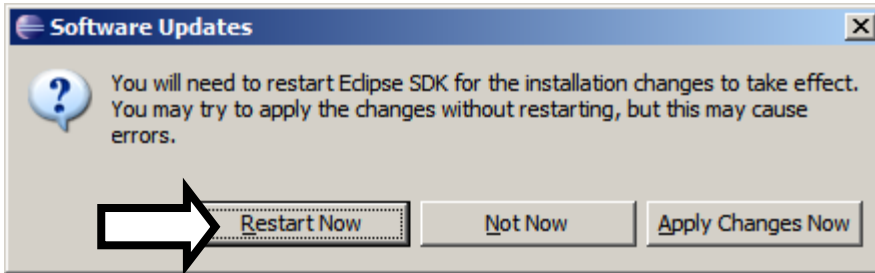
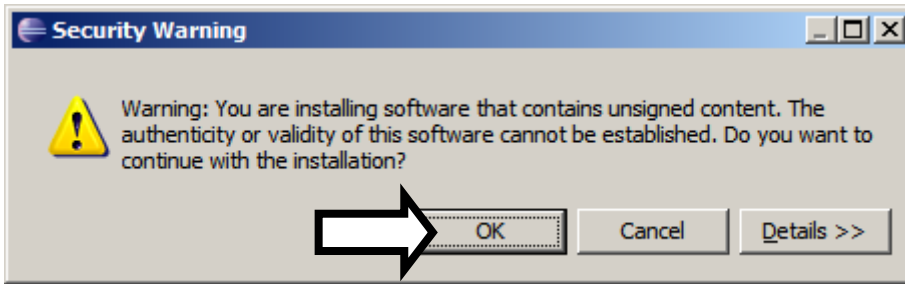
Size: 26,668 KB

Details

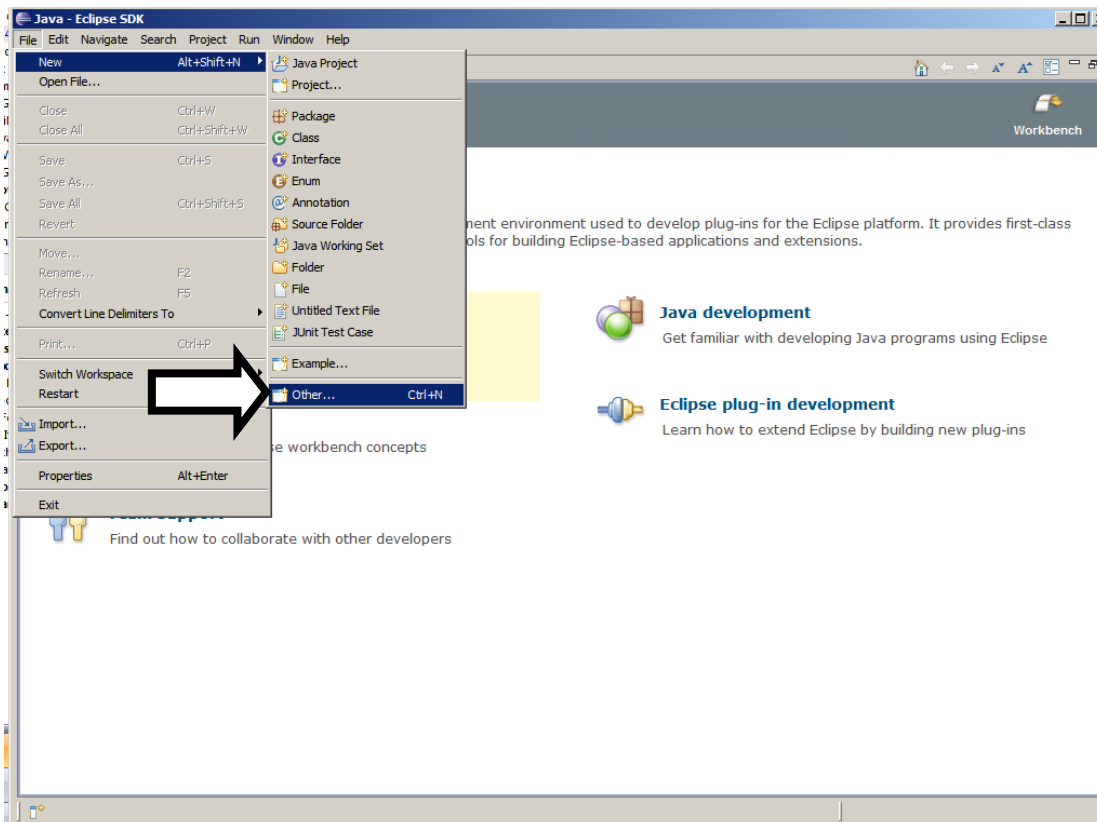
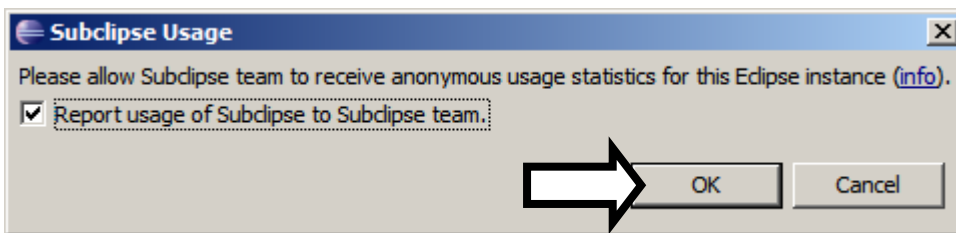
?

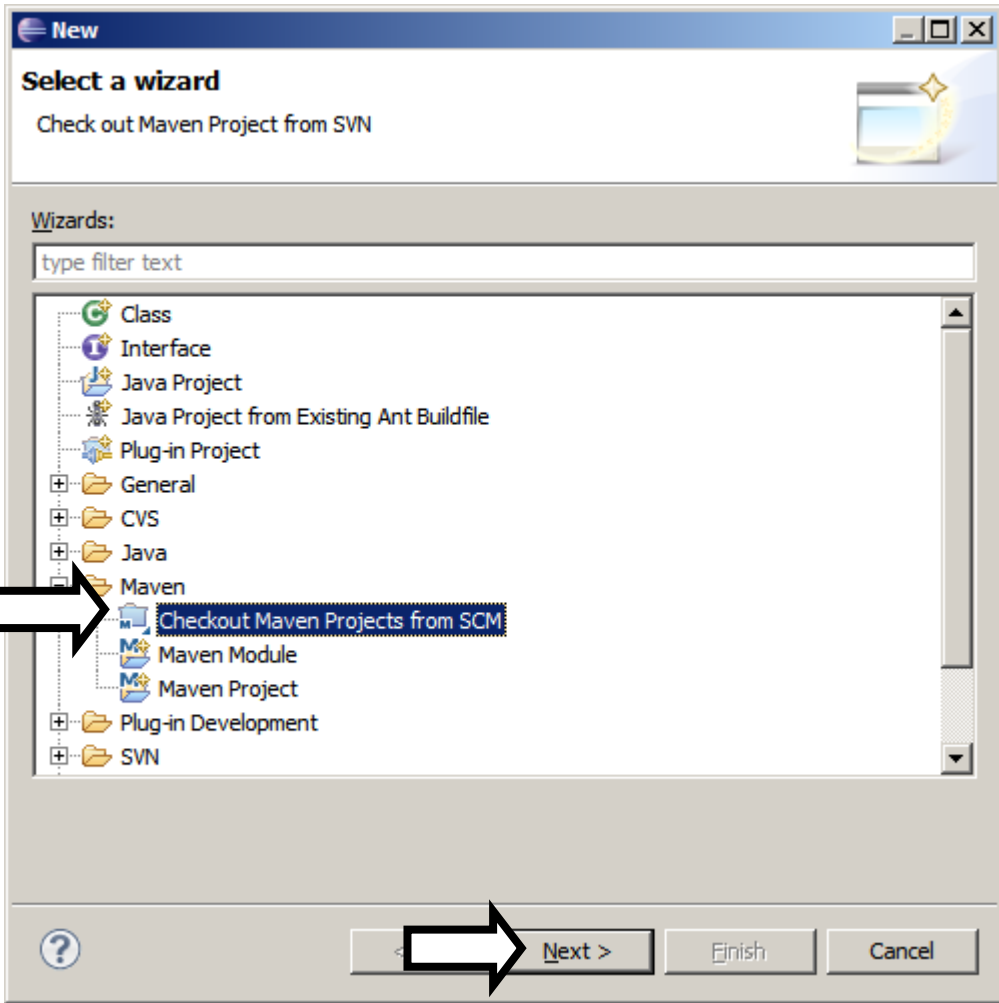
 **Next >** **Finish** **Cancel**






... restart ...





Checkout as Maven project from SCM

**Target Location**

 SCM URL field is required

SCM URL:

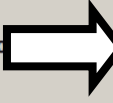
Checkout Head Revision


Revision:

Checkout All Projects

▶ Advanced

Find more SCM connectors at the [m2e Marketplace](#)







**m2e Marketplace**

### Install m2e connectors

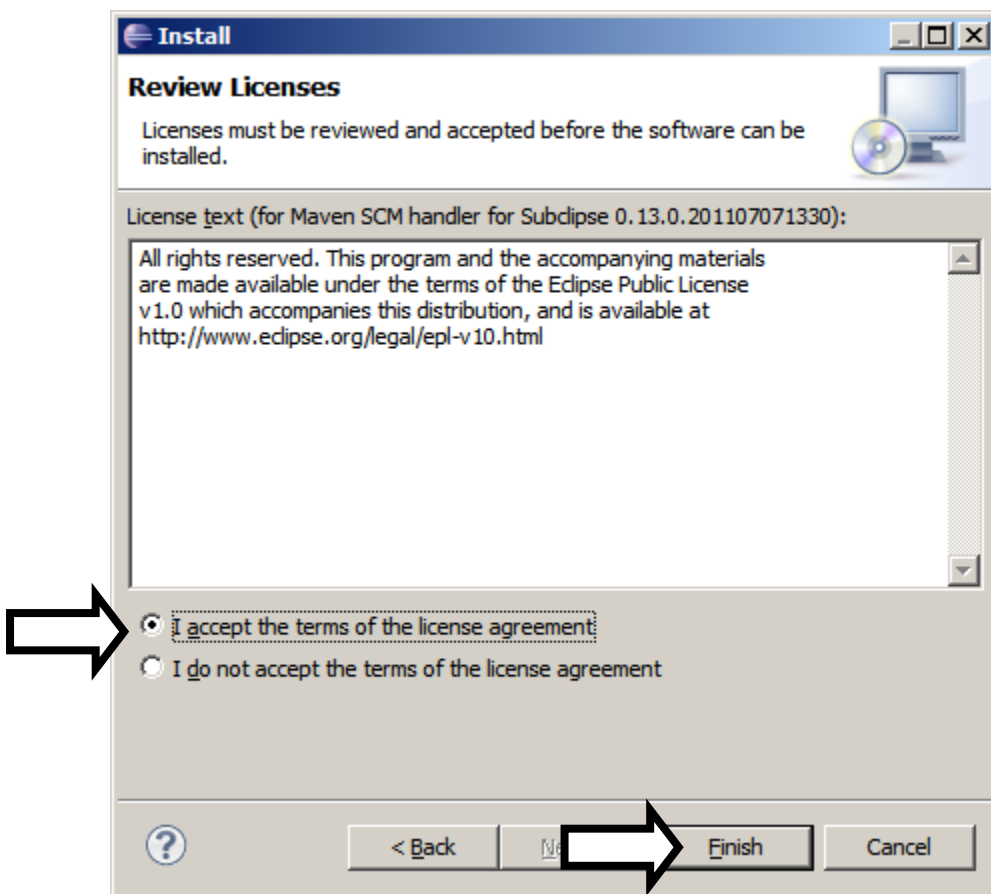
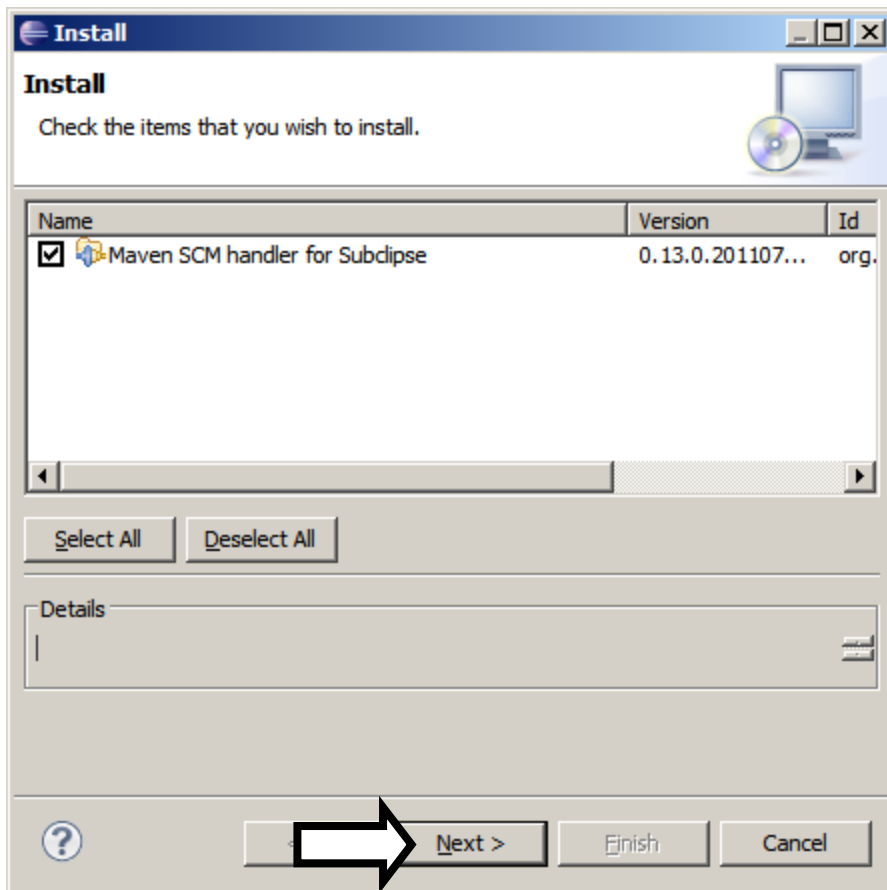
Select updates and extensions to install. Press Finish to proceed with installation.  
Press the information button to see a detailed overview and a link to more information.

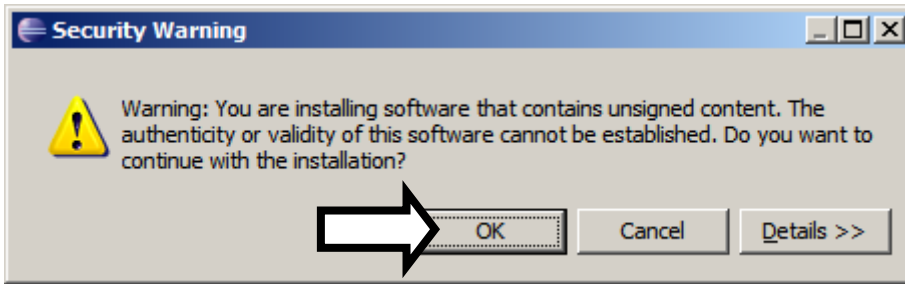
Find:   Extras  Lifecycles  Maven

- maven.runtime.3.0.3**  
Embedded Maven Runtime version 3.0.3  
by Sonatype, Inc., EPL
-  **m2e Team providers**  
m2e integration with Eclipse team providers
- m2e-cvs**  
Maven SCM Handler for CVS  
by Sonatype, Inc., EPL
- m2e-egit**  
Maven SCM Handler for EGit  
by Sonatype, Inc., EPL
- m2e-subclipse**  
Maven SCM Handler for Subclipse  
by Sonatype, Inc., EPL
- m2e-subversive**  
Maven SCM Handler for Subversive  
by Sonatype, Inc., EPL



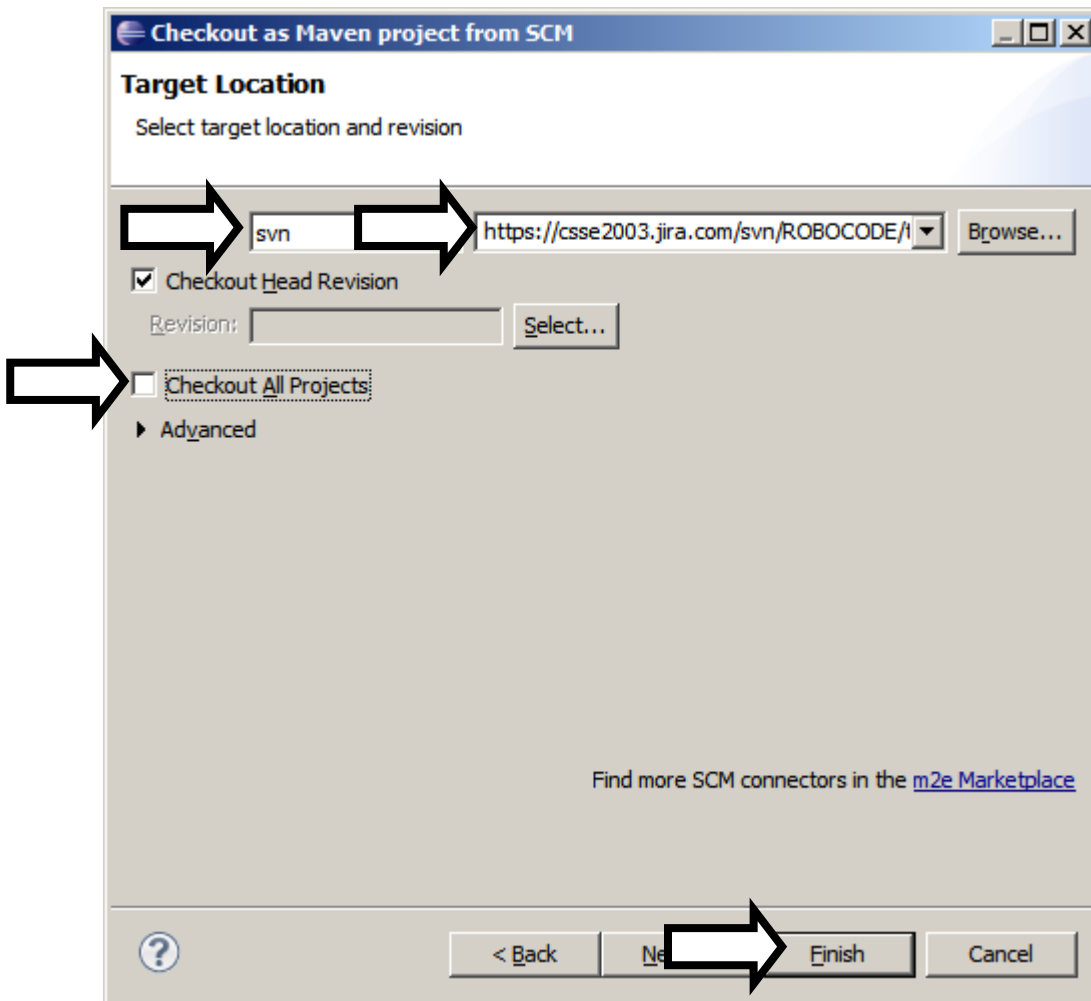


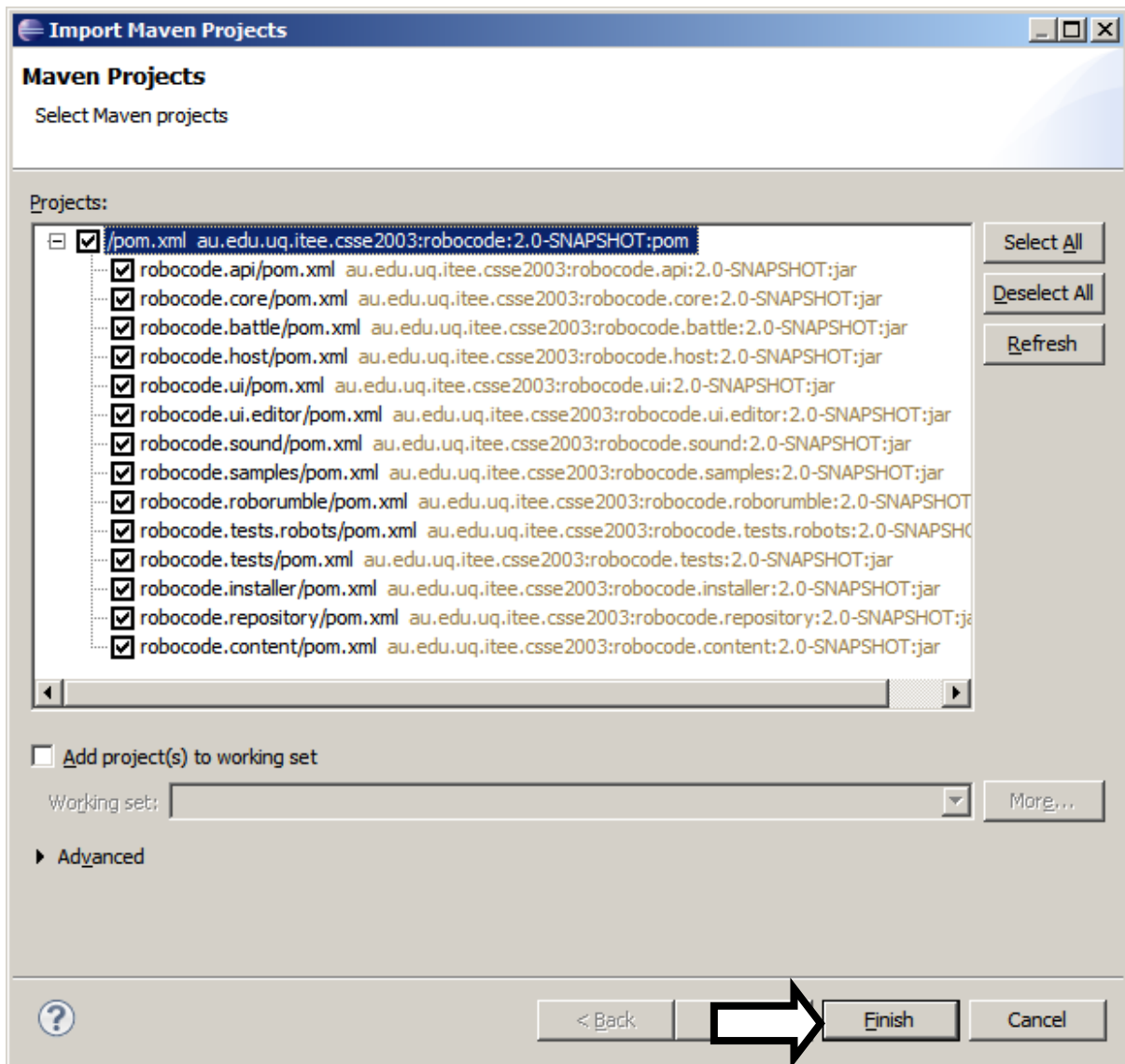




And again, but this time ...

Use: `https://csse2003.jira.com/svn/ROBOCODE/trunk`





Rumble, rumble, tick, tick, ...

